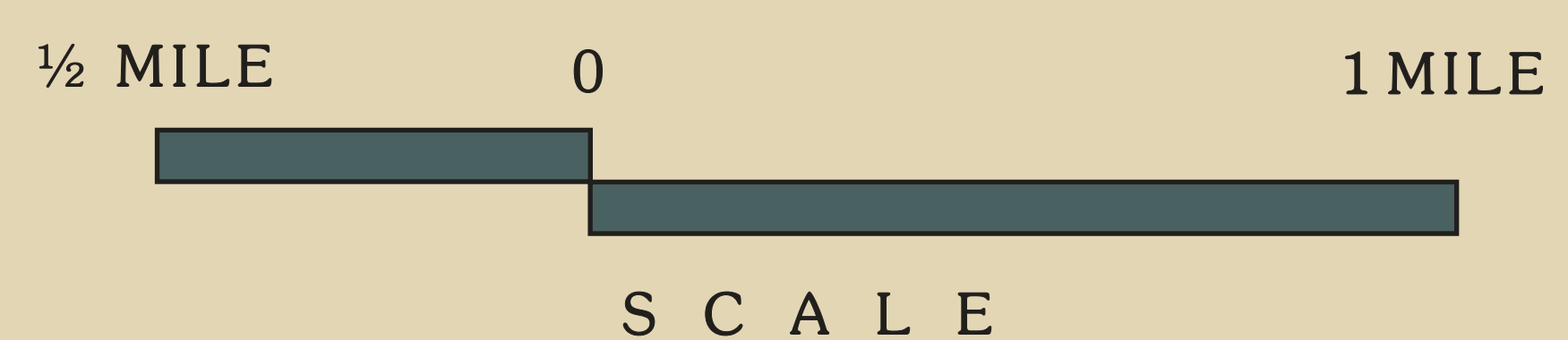
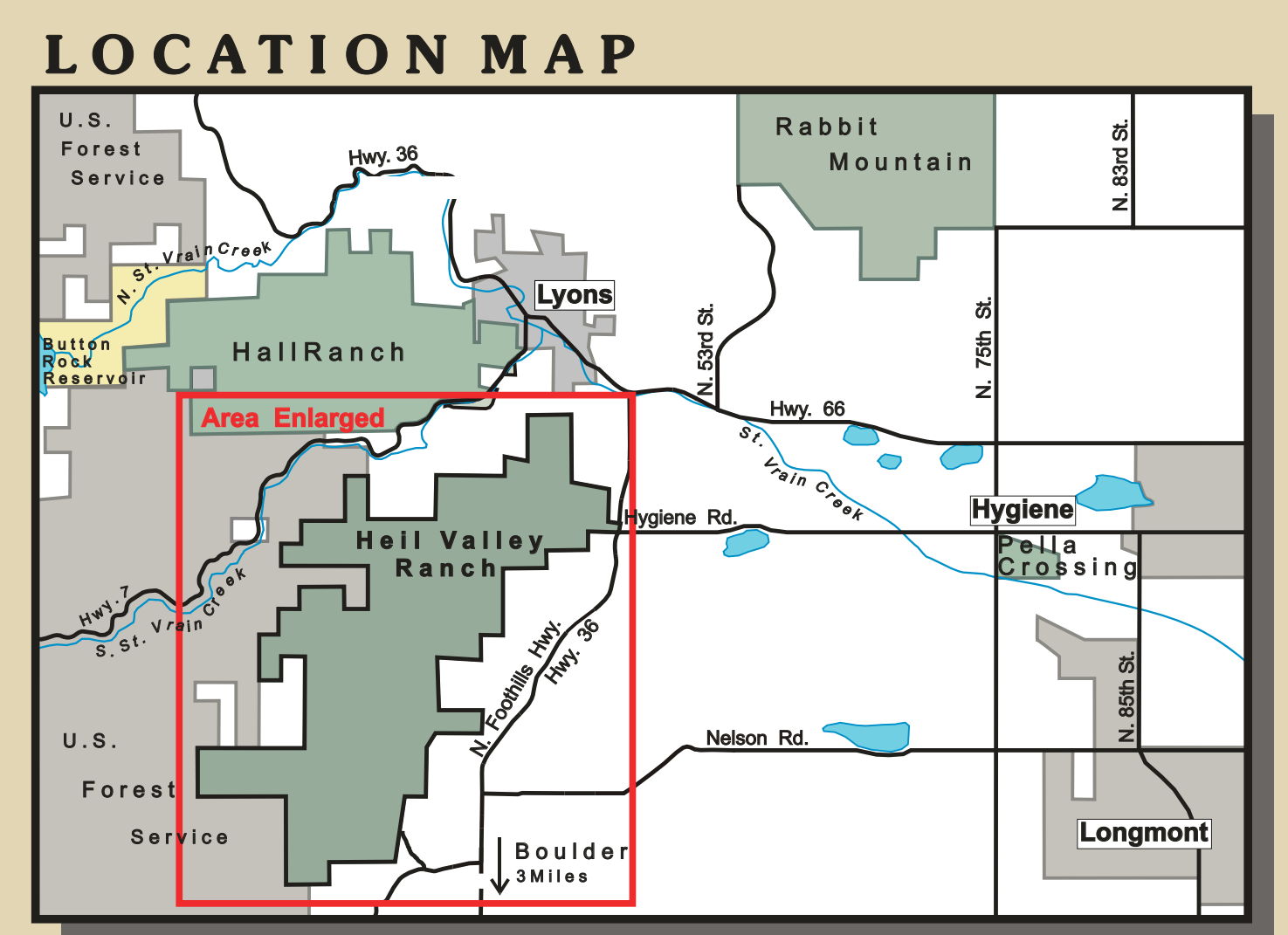
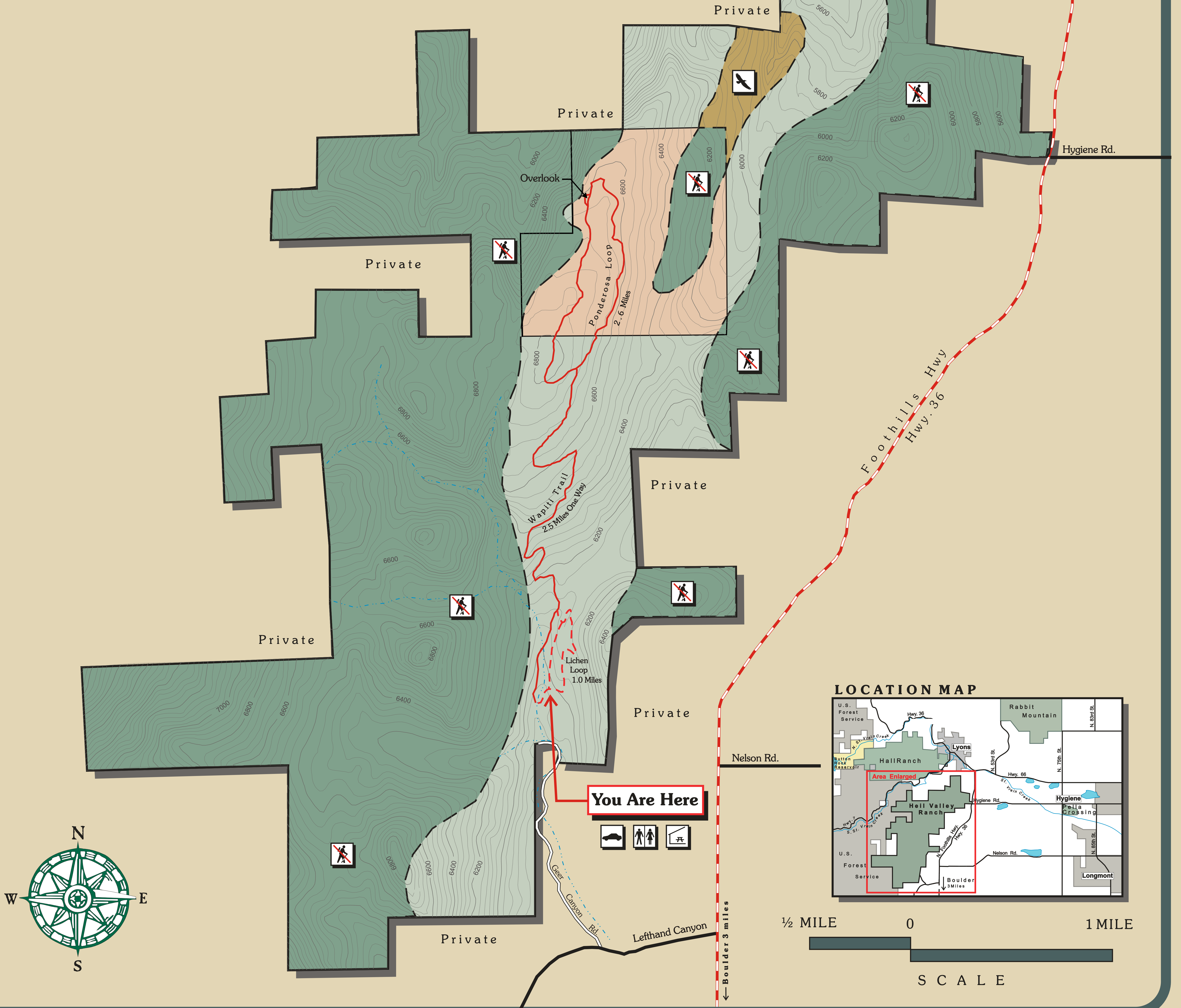


Heil Valley Ranch

NORTH FOOTHILLS OPEN SPACE



- TRAILHEAD PARKING
- RESTROOMS
- PICNIC SHELTER
- STATE LAND BOARD

- MULTI-USE TRAIL (PEDESTRIANS, EQUESTRIANS, BIKES)
- PEDESTRIAN TRAIL
- UNPAVED ROAD
- PAVED ROAD

- SEASONAL CLOSURE
NO PUBLIC ACCESS
FEBRUARY 1 THRU JULY 31
- PERMANENT CLOSURE
NO PUBLIC ACCESS

